

Sidney



Pacific



Tuesday, March 6, 2012 – Nominations Dinner



**WELCOME FROM THE
HOUSEMASTERS**

A photograph of a family of three. On the left is a woman with long dark hair, wearing a pink lace dress, smiling. In the center is a young child with dark hair, wearing a white shirt and a green patterned tie, looking directly at the camera. On the right is a man with short dark hair, wearing a black tuxedo with a white shirt and a black bow tie, smiling. The background is a plain, light-colored wall. The entire image is set against a light blue gradient background.

**WELCOME FROM THE
HOUSEMASTERS**



Brian Spatocco
Chair of the Halls

George Tucker
VP Information

George Lan
President

Ahmed Helal
VP ResLife

Holly Johnsen
VP Resources

INTRODUCING SPEC



**STORIES FROM SPEC
(SIDNEY-PACIFIC EXECUTIVE COUNCIL)**



**THANK YOU TO ALL OUR
VOLUNTEERS!**

WHAT IS SPEC?

1) BUILD THE TEAM



2) CRAFT A VISION



Sidney
Pacific

Make it Yours

3) ORGANIZE HOUSE MEETINGS AND OFFICER RETREATS



Office of the President



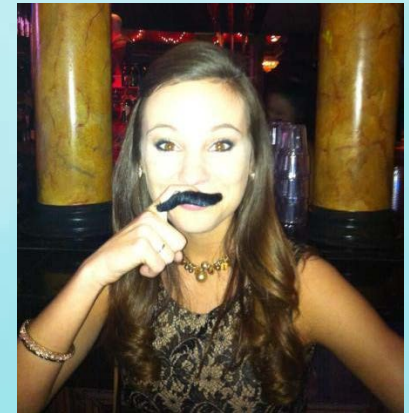
**JP
Coutu**
Environmental Chair



**David
Kwabi**
CoSI Co-Chair



**William
Li**
CoSI Co-Chair



**Emily
Calandrelli**
Community Engagement
Chair

Office of Resources

**Bikes
Zach**



**Music
Mark**



**Plants
Dawsen**



**Aquarium
Sung Wook**



**Arts
Tarun**



**AV
Justin**



**AV
Paul**



**IT
Matthew**



**Inventory
Jagdish**



**Controller
Mark**

Office of Information

**Make residents aware of the events and
resources SP has**

Photo

Web

SPTV

Newsletter

Publicity

Chair of the Halls



Burcu (1)



Tanya (2S)



Isaac (2N)



Chen (3S)



Jon (3N)



Anand (4S)



Yuan (4N)



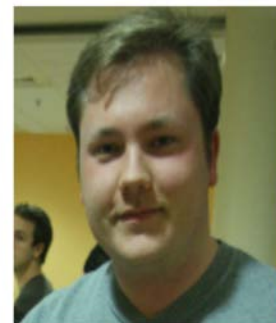
Becky (5S)



Andrew (5N)



Vivek (6)



Bernhard (7)



Kunal (8)



Jen (9)



George (House Cup)

Office of Residential Life

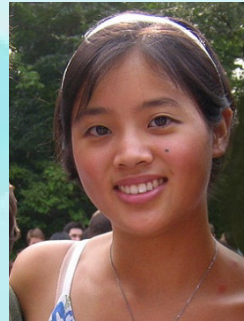


Steve

Coffee Hour



Michael



Diana

Outing



Steve

Social



Leila



Annie

SPICE



Birendra

Orientation



Hussam



Ozge

Brunch



Pierre



Armen

Athletics



Michelle

Interest Groups



David
Cultural

HOUSE COUNCIL RENEWAL

Three Processes

- **Hall Councilor Elections**
- **Cabinet (Committee Chair)
Appointments**
- **Executive Council Elections**
 - **Commences tonight!**

Hall Councilor Elections

- **File your candidacy**
 - **Register online starting April 3**
 - **Any current resident is eligible to run**
- **Meet your residents**
 - **Hall meetings held between April 10-12**
- **Vote**
 - **The residents of each Hall vote to select their Hall Councilor for 2012-2013**
 - **Online voting takes place from April 10-20**
 - **Winners take office at May House Council meeting**

Committee Chair Appointments

- **Apply Online**
 - **Applications accepted beginning March 21**
 - **All MIT students (even non-residents) eligible**
- **Interviews**
 - **2012-2013 SPEC (newly elected) will invite applicants for interviews in 2nd half of April**
- **Appointments**
 - **2012-2013 SPEC will determine new committee chairs at end of April**
 - **New Cabinet (Committee Chairs) take office at the May House Council Meeting**

Executive Council Elections

- **Nominations**
 - **Open from March 6 through March 20**
- **Nominees**
 - **Submit statement to**
 - **sp-nominations@mit.edu by March 20 to be posted on web**
- **Election**
 - **April 3 House Council Meeting**
 - **Current House Council votes on candidates**
 - **Newly elected SPEC takes office April 17**

March – May 2012

Tuesday, 3/6	SPEC Nominations Dinner
Tuesday, 3/13	SPEC Info Session
Tuesday, 3/20	SPEC Nominations Close
Wednesday, 3/21	Committee Chair applications open
Tuesday, 4/3	SPEC elections Hall Councilor nominations open
Tuesday, 4/10	Committee Chair applications close
Tue 4/10–Thu 4/12	Meet the Hall Councilor candidates
Tuesday, 4/17	Hall Councilor nominations close New SPEC takes office
Tue 4/10–Fri 4/20	Hall Councilor Elections
Tuesday, 5/1	New House Council takes office



EXECUTIVE COUNCIL NOMINATIONS

Nomination Procedures

- **What are you nominating for?**
 - One or more of the following positions:
 - President
 - Vice-President of Information
 - Vice-President of Residential Life
 - Vice-President of Resources
 - Chair of the Halls
- **Who can nominate?**
 - Any resident
- **Who can be nominated?**
 - Any graduate student who lives in the building
- **How can you nominate?**
 - State a name and position
 - Email sp-nominations@mit.edu with a name and position within the next two weeks
 - Self-nominations are accepted